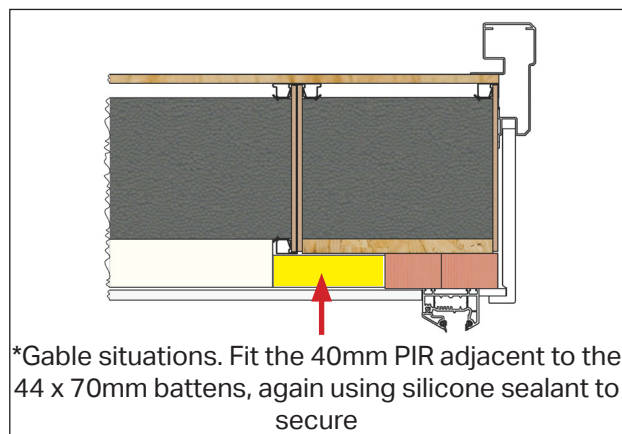
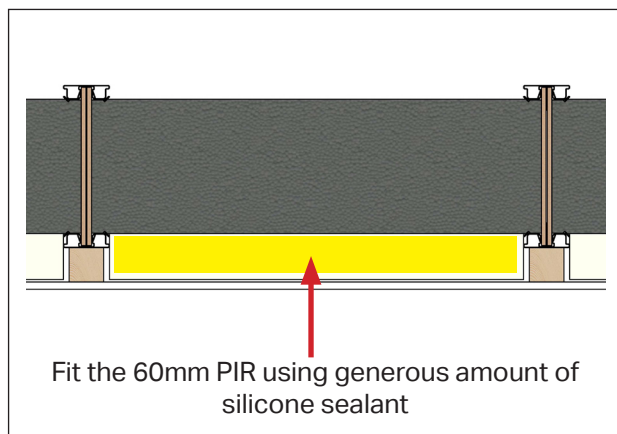
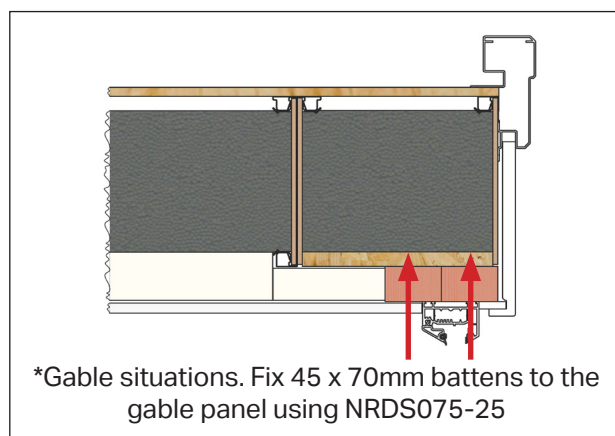
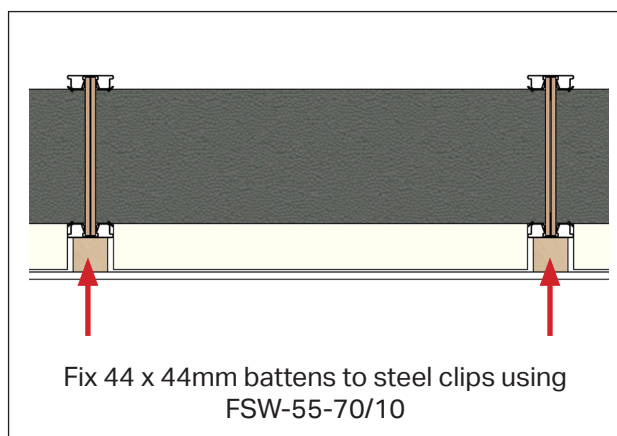
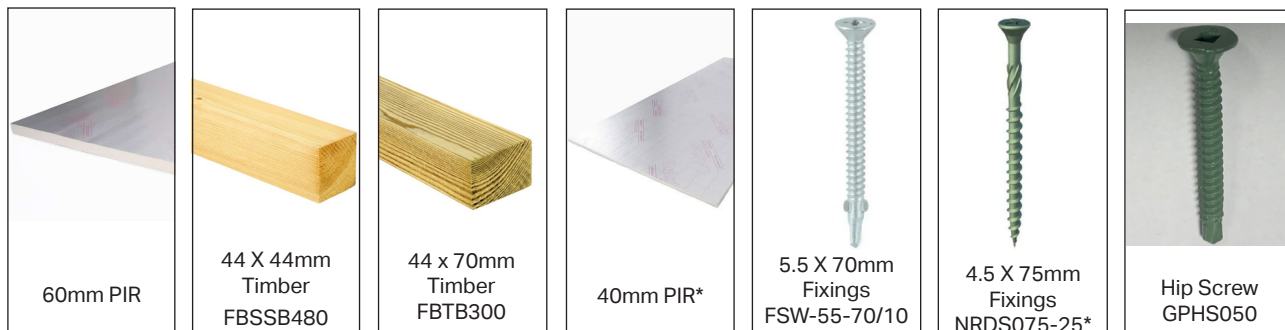


# Ultraroom Thermal Improvements

Additional Parts Supplied. \*Gable situations



Foil backed plasterboard may then be fitted to the timber battens in the normal way.

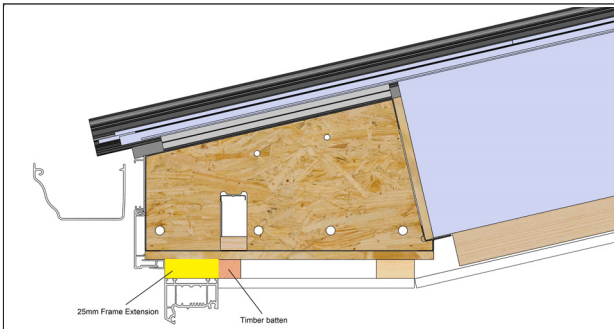
Please contact the Tech Support Team on 01200 452 918 or email [techsupport@ultraframe.co.uk](mailto:techsupport@ultraframe.co.uk)

For everything you need to know about Ultraroom including guides and installation videos visit [ur380info.co.uk](http://ur380info.co.uk) or scan the QR Code

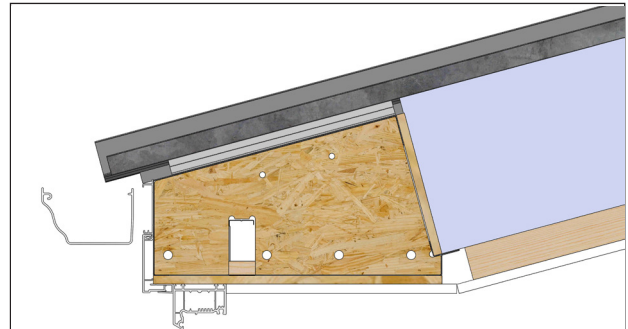


  
By Ultraframe

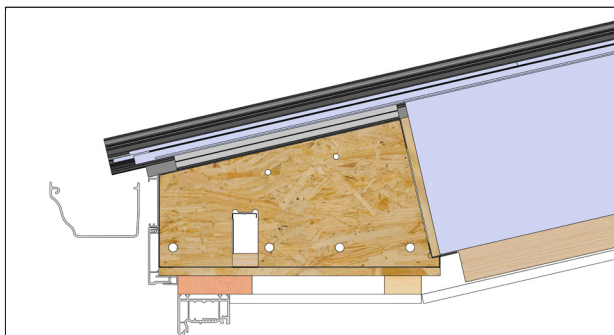
## Plasterline Guidance



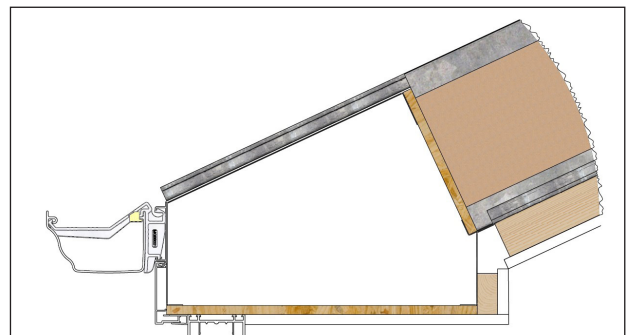
This image is the plaster line detail when at 12.5° using 25mm frame extensions.



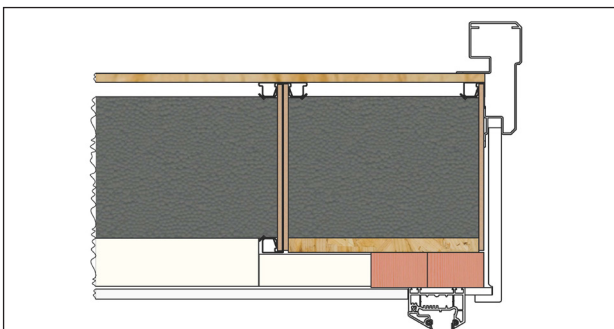
This image is the plaster line detail when at 15°



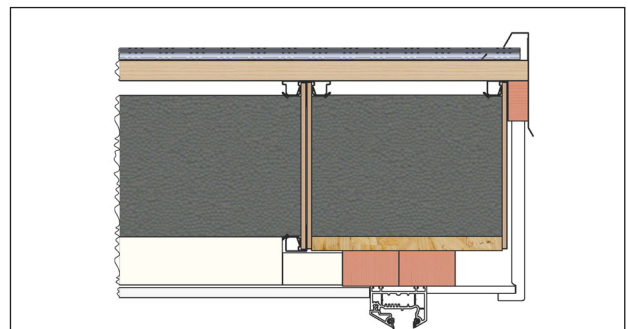
This image is showing the plaster line at 12.5° to 15° using 100 x 25mm timber packer (not supplied)



This image is the plaster line detail when at 25°

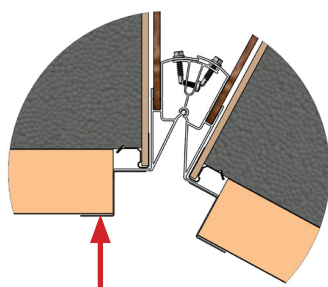


This image is showing the plaster line detail for a standard gable front. 44 x 70mm timber required above the gable frame.



This image is showing the plaster line detail for an extended gable front. 44 x 70mm timber required above the gable frame.

### Hip Cross Section



Secure steel hip sections using GPHS050 screw at 450mm centres

Steel hip sections

**Ultrar**roof<sup>®</sup>  
By Ultraframe